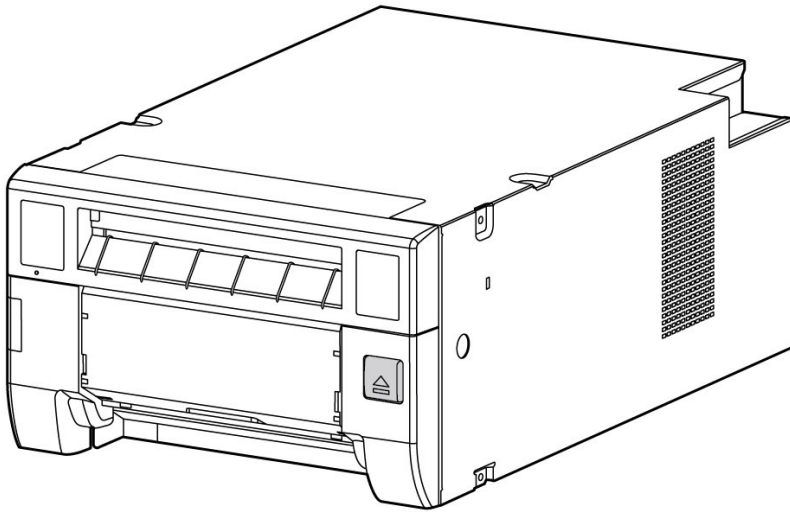


# Kodak

## 305 Photo Printer



# Printer Driver Guide

September 2020

Kodak Alaris Inc.

336 Initiative Dr., Rochester, NY 14624

© 2020 Kodak Alaris Inc.

The Kodak trademark and Kodak trade dress are used under license from Eastman Kodak Company.

P/N 4J9787

---

# Table of Contents

## 1 Getting Started

About the Printer Driver .....	1-1
Features of the Printer Driver .....	1-1
Hardware and Software Requirements.....	1-2

## 2 Installing and Uninstalling the Printer Driver

Installing the Printer Driver .....	2-1
Installing the Printer Driver on a WINDOWS 7, WINDOWS 8, or WINDOWS 10 Operating System.....	2-2
Uninstalling the Printer Driver.....	2-3
Uninstalling the Printer Driver on a WINDOWS 7 or WINDOWS 10 Operating System.....	2-4
Uninstalling the Printer Driver on a WINDOWS 8 Operating System.....	2-5

## 3 Using the Printer Driver with the WINDOWS Operating System

Changing Print Options from an Application .....	3-1
Selecting the Options on the Paper Tab .....	3-2
Setting the Options on the Options Tab.....	3-5
Setting the Options on the Color Adjust Tab.....	3-6
Checking the Color Profile .....	3-7
Adding a Color Profile .....	3-7
Removing a Color Profile .....	3-8

## 4 Troubleshooting

Printer Error Messages.....	4-1
-----------------------------	-----



---

# 1 Getting Started

Welcome to the User's Guide for the KODAK 305 Photo Printer Driver for MICROSOFT WINDOWS Operating Systems. The printer driver provides access to the printer features.

## About the Printer Driver

With the 305 Printer Driver, you can access the printer specific features from your software applications. For example, your application determines the page breaks, font selection, and page setup for your print job. The printer driver translates this information into a printer ready output and sends the print job to the printer. The printer driver gives you additional printing options that may not be available from your software application.

## Features of the Printer Driver

The printer driver provides the following printing options that may not be available directly from your software application:

- Color Management—You can make prints using the default color settings, then adjust the color, brightness, contrast, and saturation.
- Layout—Choose layout options such as orientation, number of copies, sharpening, and scaling.
- Print Speed—Choose from a standard print speed to ultra fine for a higher print quality.

## Hardware and Software Requirements

You must have the following:

- MICROSOFT WINDOWS 7, MICROSOFT WINDOWS 8, or MICROSOFT WINDOWS 10 (latest service pack version available).
- Minimum main storage memory and hard disk capacity must be 512 Mb or more.
- A USB cable that is 2M or shorter.
- Available USB port (USB 1.1 and USB 2.0 protocol compatible).

Select the appropriate printer driver for your operating system.

---

## 2 Installing and Uninstalling the Printer Driver

The following installation instructions assume that you are familiar with MICROSOFT WINDOWS Operating Systems and terminology.

### Installing the Printer Driver

You must have “administrator” privileges to add a printer.

**IMPORTANT:** *Before installing the software, you must have the latest printer firmware version installed on your printer.*

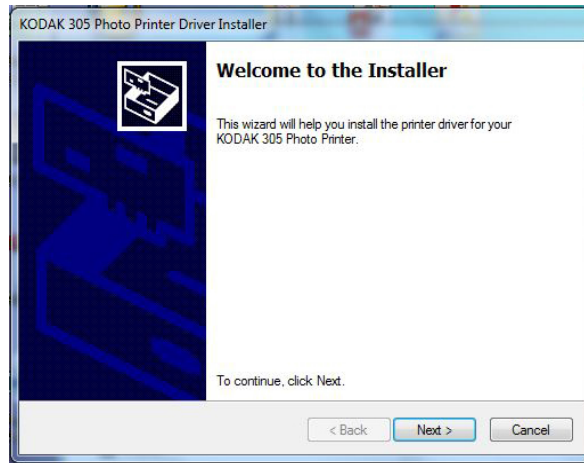
*If you have an older version of the printer driver, you must uninstall the older version. See “Uninstalling the Printer Driver” on page 3.*

1. Go to [www.kodakalaris.com/go/rss](http://www.kodakalaris.com/go/rss).
2. Select:
  - the **Retail System Solutions** tab
  - **Printers/Media**
  - **Standalone Printer Support**
3. Select the link for the 305 Photo Printer and download the correct printer driver.
4. Locate the file that you downloaded to your hard drive and double-click the file.
5. When the WinZip Self-Extractor screen appears, browse to a folder location that is easy to access, such as your computer's desktop. Click **Unzip**.  
An Installer folder is created containing all of the files.
6. Complete the installation. See page [2-2](#)

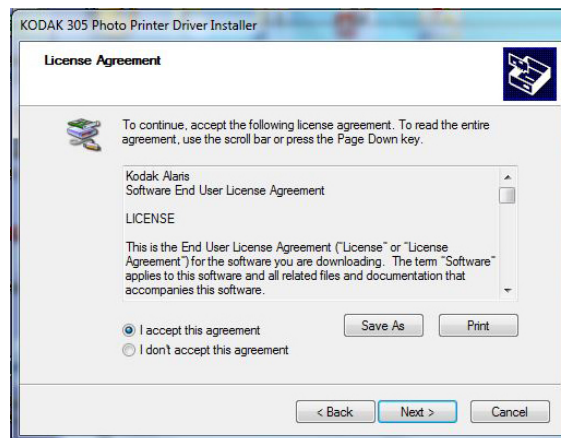
### Installing the Printer Driver on a WINDOWS 7, WINDOWS 8, or WINDOWS 10 Operating System

**IMPORTANT:** *Make sure that you disconnect the printer from the computer before you install the printer driver.*

1. Log on to your computer as an “Administrator” or “Administrator group members”.
2. Navigate to the folder where you saved the printer driver file.
3. Double-click **Install\_Drv.exe**.
4. At, “Welcome to the Installer”, click **Next**.

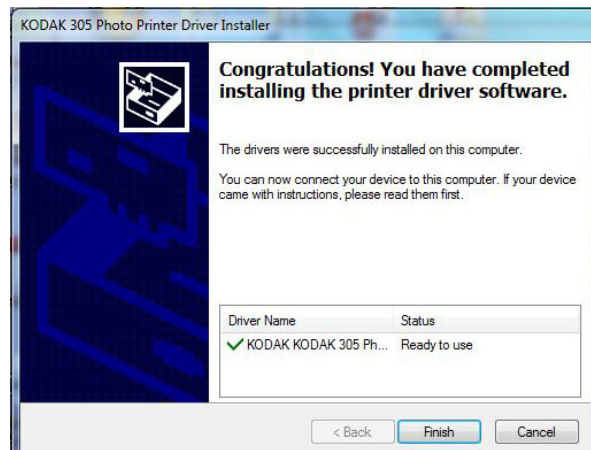


5. At the license agreement, select:
  - I accept this agreement.
  - **Next**

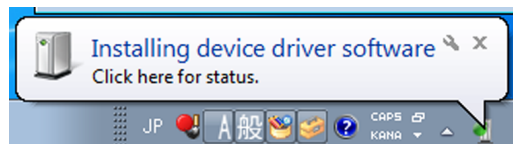




6. Click **Finish**.



7. Connect the printer to the computer.
8. Move the power switch for the printer to the On ( | ) position.  
*The driver software is automatically installed.*
9. Click the balloon to check the installation status.



## Uninstalling the Printer Driver

Before you remove the printer driver, make sure that:

- the printer driver is not being used by an application.
- there are no jobs waiting to be printed.
- if you are using the printer with WINDOWS 7 Operating Systems, make sure that the printer is not set as the default printer.
- if you uninstall and then reinstall the printer driver, make sure that you restart the computer after you reinstall the printer driver.

### **Uninstalling the Printer Driver on a WINDOWS 7 or WINDOWS 10 Operating System**

You must have “administrator” privileges to remove a printer.

1. Select **Start > Control Panel > Devices and Printers**.
2. Click the icon for the KODAK 305 Photo Printer.
3. Right-click and select **Remove Devices**.
4. Click **Yes** at the message prompt.
5. From the “Devices and Printers” window, click the icon for the MICROSOFT XPS Document Writer or any other printer.
6. Click **Print Server Properties**.
7. Select the “Drivers” tab.
8. Click **Change Driver Settings**.
9. Select the printer driver that you want to remove.
10. Click **Remove**.
11. At, “Remove Driver And Package”:
  - Select “Remove driver only.”
  - Click **OK**.
12. At, “Printer Server Properties”, click **Yes**.
13. If “Driver package information collected” appears, click **Delete**.
14. At, “Driver package deleted”, click **OK**.
15. Confirm that the driver is removed:
  - Select **Start > Control Panel > Programs and Features**
  - Right-click **Windows Driver Package –KODAK 305 Photo Printer**.
  - Select **Uninstall/Change**.
  - Make sure that the printer driver is removed.
16. Disconnect the USB cable from the printer.
17. Restart the computer.

### Uninstalling the Printer Driver on a WINDOWS 8 Operating System

You must have "administrator" privileges to remove a printer.

1. On the keyboard, press the WINDOWS "START" Key and "C".
2. Select **Settings > Control Panel > Devices and Printers**.
3. Click the icon for the KODAK 305 Photo Printer.
4. Right-click and select **Remove Devices**.
5. Click **Yes** at the message prompt.
6. From the "Devices and Printers" window, click the icon for the MICROSOFT XPS Document Writer or any other printer.
7. Click **Print Server Properties**.
8. Select the "Drivers" tab.
9. Click **Change Driver Settings**.
10. Select the printer driver that you want to remove.
11. Click **Remove**.
12. At, "Remove Driver And Package":
  - Select "Remove driver only."
  - Click **OK**.
13. At, "Printer Server Properties", click **Yes**.
14. If "Driver package information collected" appears, click **Delete**.
15. At, "Driver package deleted", click **OK**.
16. Confirm that the driver is removed:
  - Select **Settings > Control Panel > Programs and Features**
  - Right-click **Windows Driver Package -KODAK KODAK 305 Photo Printer**.
  - Select **Uninstall/Change**.
  - Make sure that the printer driver is removed.
17. Disconnect the USB cable from the printer.
18. Restart the computer.



---

# 3 Using the Printer Driver with the WINDOWS Operating System

This section describes how to use the printer driver to send print jobs to the KODAK 305 Photo Printer from your computer.

## Changing Print Options from an Application

You can use the Printing Preferences dialog box to select print options from an application.

1. In your application, select **Print** from the File menu.
2. Depending on the application, click **Properties** or **Setup** in the Print dialog box.
3. Select options from the tabs in the Printing Preferences dialog box (shown on the following pages), then click:
  - **OK**—to save your selections and close the dialog box
  - **Cancel**—to cancel your selections and close the dialog box
  - **Apply**—to save your selections without closing the dialog box
4. Depending on the application, click **OK** or **Print** in the Print dialog box.

## Selecting the Options on the Paper Tab

You can select the following options on the Paper tab:

- **Paper Size**—the size of paper.

NOTE: When you select a Paper Size, the following change depending on the paper size that you select:

- **Print Pixel**—the number of dots/pixels per inch. The print pixel number varies depending on the paper size.
- **Print Size**—the print size.

### Available Print Sizes:

Print Size	Image Size
2 x 6 in. (51 x 152 mm)	624 x 1864 pixels
2 x 6 in. x 2 Type 1 (51 x 152 mm x2)	1218 x 1864 pixels
2 x 6 in. x 2 Type 2 (51 x 152 mm x2)	609 x 1864 pixels
3 x 5 in. (76 x 127 mm)	926 x 1568 pixels
3 x 5 in. x 2 Type 1 (76 x 127 mm x 2)	1568 x 1888 pixels
3.5 x 5 in. (90 x 130 mm)	1076 x 1568 pixels
3.5 x 5 in. x 2 Type 1 (90 x 130 mm x 2)	1568 x 2190 pixels
3 x 6 in. (76 x 152 mm)	926 x 1864 pixels
3 x 6 in. x 2 Type 1 (76 x 152 mm x 2)	1864 x 1888 pixels
4 x 6 in. (102 x 152 mm)	1218 x 1864 pixels
4 x 6 in. x 2 Type 1 (102 x 152 mm x 2)	1864 x 2454 pixels
5 x 5 in. (127 x 127 mm)	1524 x 1568 pixels
5 x 7 in. (130 x 180 mm)	1568 x 2128 pixels
6 x 6 in. (152 x 152 mm)	1820 x 1864 pixels
6 x 8 in. (152 x 203 mm)	1864 x 2422 pixels
6 x 8 in. (152 x 203 mm) border	1536 x 2126 pixels

**Type 1 Example**—To print a 2 x 6 in. Type 1 (51 x 152 mm x 2) print, a 4 x 6 in. image sent to the printer, resulting in the printer automatically cutting the 4 x 6 in. print into two 2 x 6 in. prints. To use this mode, compose two 2 x 6 in. images on one 4 x 6 in. layout. This is necessary when the program is unable to send two different images simultaneously to the printer.

**Type 2 Example**—To print a 2 x 6 in. Type 2 (51 x 152 mm x 2) print, two different 2 x 6 in. images can be sent simultaneously to printer. The printer prints two 2 x 6 in. prints using one 4 x 6 in. paper sheet. If just one 2 x 6 in. image is sent to the printer, the printer prints it along with a blank sheet.

- **Orientation**

- **Portrait**—orients the print vertically.
- **Landscape**—orients the print horizontally.

- **Copies**—the number of copies to print.

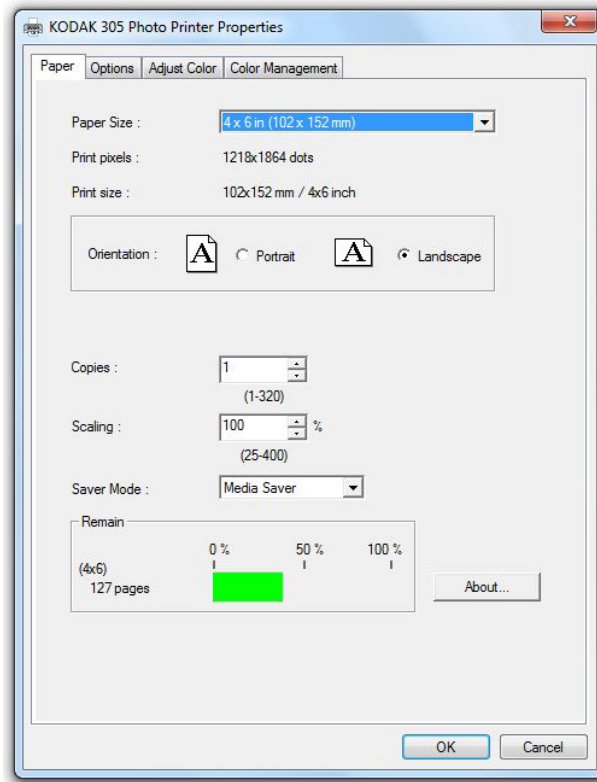
- **Scaling**—scales a print by a specified percentage.

- **Saver Mode**

- **Media Saver**—does a ribbon rewind to use unclaimed patches on the ribbon.
- **Time Saver**—saves print time compared to Media Saver mode.

- **Remain**—the remaining amount of ribbon in the printer to produce 4 x 6 in. prints. The number of prints remaining on the ribbon depends on the paper and print size selected.

- **About**—display driver information.

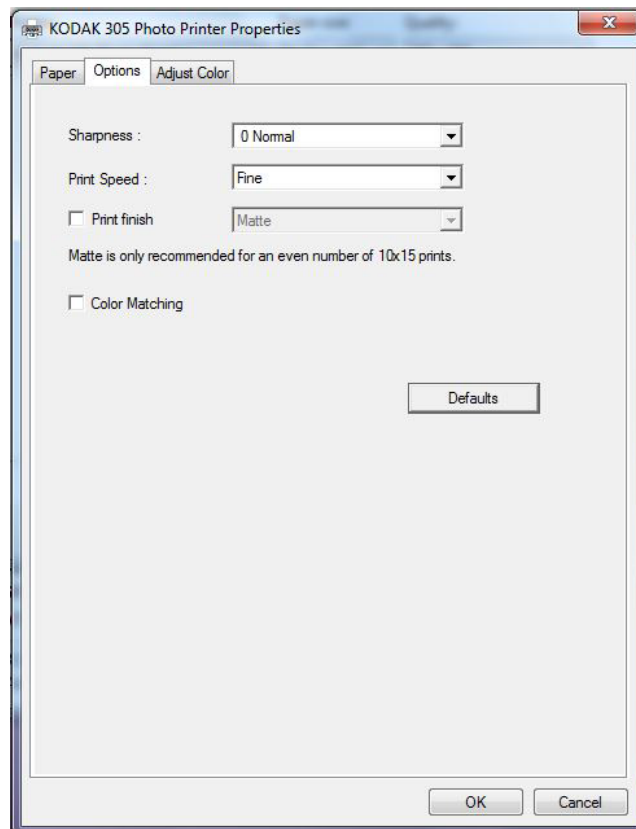




## Setting the Options on the Options Tab

You can select the following options on the Options tab:

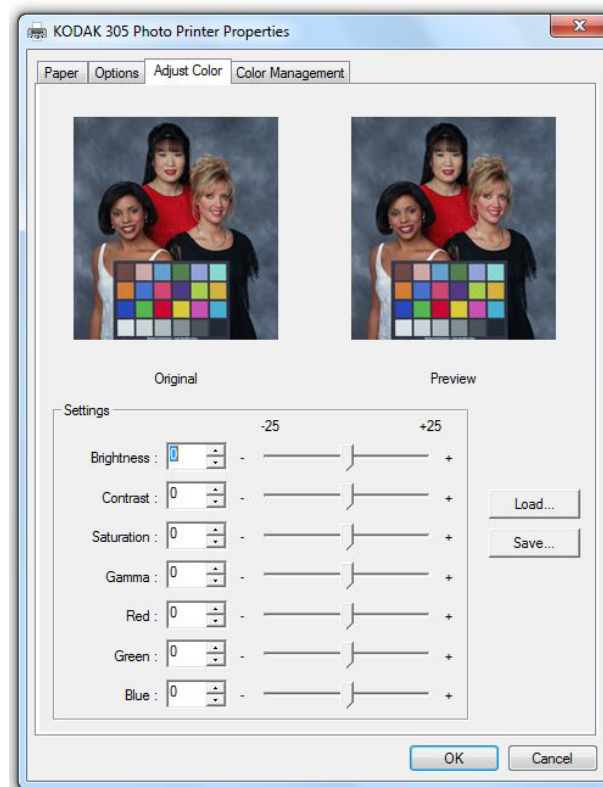
- **Sharpness**—sets an amount of None, -3 Soft, -2, -1, 0 Normal, 1, 2, 3 Hard image enhancement to improve the sharpness of the print.
- **Print Speed**
  - **Fine**—standard print speed for standard print quality.
  - **Ultra Fine**—slower print speed for high print quality. Ultra Fine is only available on printers with the latest firmware.
- **Print Finish**—select print finish.
- **Color Matching**—select to use the ICC profile on the Color Management tab in the application that you are using. Color matching may not be available with some applications.
- **Defaults**—all settings on the Option tab are reset to the default settings.



## Setting the Options on the Color Adjust Tab

You can select the following options on the Color Adjust tab:

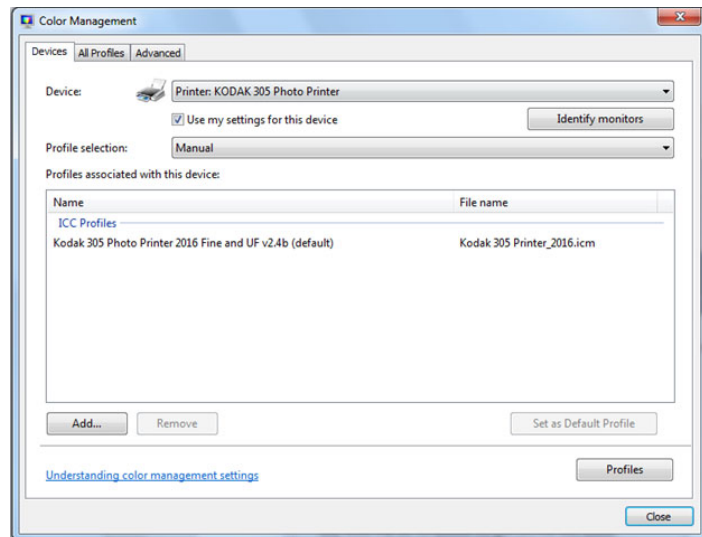
- **Brightness**—adjusts the relative lightness or darkness.
- **Contrast**—adjusts the relationship between the light areas, midtones, and dark areas.
- **Saturation**—adjusts the intensity of the colors.
- **Gamma**—adjusts the lightness or darkness of the midtones.
- **Red**—adds or subtracts red.
- **Green**—adds or subtracts green.
- **Blue**—adds or subtracts blue.
- **Load**—load the color adjust settings.
- **Save**—save the color adjust settings.



## Checking the Color Profile

The printer driver package includes the profile “Kodak 305 Printer\_2016.icm” that can be used in both Fine and Ultra fine Modes. The profile is automatically associated with the 305 Printer when the driver is installed. To make sure this profile is being used:

1. Select **Print Menu > Print... > Options > Color Management**.
2. From the Device pull-down menu, check that “KODAK 305 Photo Printer” is selected.
3. Verify that the:
  - ICC Profile is listed as “Kodak 305 Printer 2016 Fine and UF v2.4b.”
  - File name is listed as “Kodak 305 Printer\_2016.icm.”



4. To make sure the correct profile is always used, select:
  - “Manual” as the Profile selection
  - “Use my setting for this device”

## Adding a Color Profile

1. Install the profile in the folder:  
C:\Windows\System32\spool\drivers\color
2. Right-click the profile.
3. Select “Install Profile”.
4. Select “Add...” from the Color Management Window.
5. Select the profile from the “Associate Color Profile” Window.

### **Removing a Color Profile**

1. To remove a color profile, select the profile in the "Color Management" Window.
2. Select **Remove > Continue**.

---

# 4 Troubleshooting

## Printer Error Messages

The printer driver uses the standard error handling provided by the operating system. Error messages are displayed with the spooler status window (printer queue).

NOTE: When an error occurs during printing, it may appear on the monitor. Check the operator control panel for additional information.

Number	Problem/Error Message	Description or Causes	Solution
1	The printer is not connected.	The printer driver cannot connect to the printer.	Check that the printer power is on and that the printer is connected to your computer.
2	The printer does not respond.	----	<ul style="list-style-type: none"><li>Click <b>OK</b>.</li></ul> Turn the printer off and then back on. <ul style="list-style-type: none"><li>If problem persists, contact KODAK Service and Support.</li></ul>
3	Something is wrong with the printer. (XXXXXX).	----	<ul style="list-style-type: none"><li>Click <b>Cancel</b>.</li></ul> Turn the printer off and then back on. <ul style="list-style-type: none"><li>If problem persists, contact KODAK Service and Support.</li></ul>
4	Mechanical Error(XXXXXX). Set paper again.	<ul style="list-style-type: none"><li>Out of paper</li><li>Paper is partially loaded</li><li>Paper ran out while loading</li></ul>	Load paper or check that the paper is installed properly.
5	Mechanical Error(XXXXXX).	----	<ul style="list-style-type: none"><li>Click <b>Cancel</b>.</li></ul> Turn the printer off and then back on. <ul style="list-style-type: none"><li>If problem persists, contact KODAK Service and Support.</li></ul>
6	Printing unit is opened.	The print unit is opened.	Check the operator control panel for additional information and close the print unit.
7	Printing unit is opened while printing.	The print unit is opened.	Check the operator control panel for additional information and close the print unit.

Number	Problem/Error Message	Description or Causes	Solution
8	Ribbon and paper type do not match.	Ribbon and paper mismatch.	Load the correct ribbon and paper.
9	Ribbon is not correctly installed.	<ul style="list-style-type: none"> <li>▪ Out of ribbon</li> <li>▪ Ribbon is partially loaded</li> </ul>	Load ribbon or check that the ribbon is installed properly.
10	Ribbon end.	Out of ribbon.	Load ribbon or check that the ribbon is installed properly.
11	Paper empty.	<ul style="list-style-type: none"> <li>▪ Out of paper</li> <li>▪ Paper is partially loaded</li> <li>▪ Paper ran out while loading</li> </ul>	Load paper or check that the paper is installed properly.
12	The Ribbon is not standard.	The printer cannot determine the type of ribbon that is loaded.	Load the correct ribbon.
13	The printer was turned off while printing.	The printer was turned off while printing.	Move the power switch for the printer to the on (   ) position.
14	Paper jam(XXXXXX). Set paper again.	A paper jam has occurred.	Check the operator control panel for additional information and clear the paper jam.
15	Paper size of printer driver and Ribbon type do not match.	Ribbon and paper mismatch.	Load the correct ribbon and paper.
16	Ribbon empty. Replace Ribbon.	Out of ribbon.	Load ribbon or check that the ribbon is installed properly.
17	Paper end.	Out of paper.	Load paper or check that the paper is installed properly.
18	The printer not equipped with the Trim tray.	The trim tray is not installed.	Install the trim tray.
19	Ribbon error. (XXXXXX).	<ul style="list-style-type: none"> <li>▪ Out of ribbon</li> <li>▪ Ribbon is partially loaded</li> </ul>	Load ribbon or check that the ribbon is installed properly.
20	Ribbon error. (XXXXXX). Set paper and Ribbon again.	<ul style="list-style-type: none"> <li>▪ Out of paper or ribbon</li> <li>▪ Paper or ribbon is partially loaded</li> <li>▪ Paper or ribbon ran out while loading</li> </ul>	<ul style="list-style-type: none"> <li>▪ Load ribbon or check that the ribbon is installed properly.</li> <li>▪ Load paper or check that the paper is installed properly.</li> </ul>